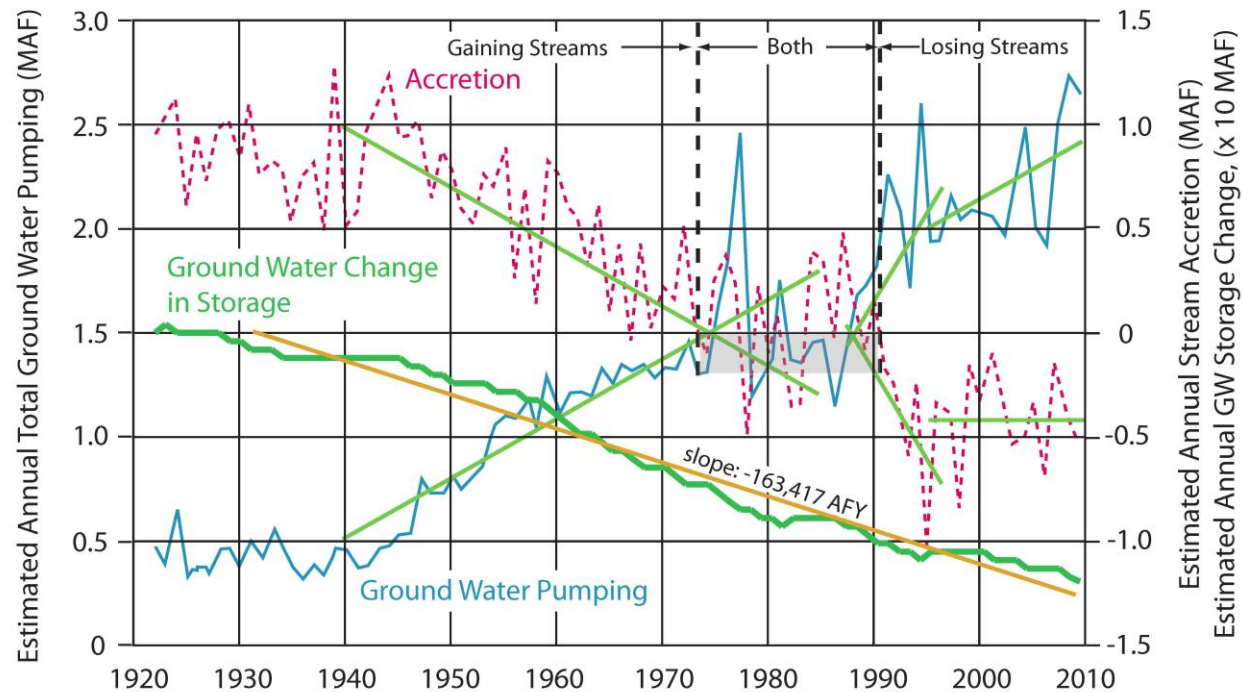


AQUALLIANCE

DEFENDING NORTHERN CALIFORNIA WATERS

Exhibit 10.7

Comparison of Ground Water Pumping and Accretion
Sacramento Valley
1920's to 2009



Changes in Accretion, Ground Water Pumping and Ground Water Storage

1. 1920's: ~+953 TAFY accretion with ~+451 TAFY gw pumping = ~ 1,400 TAFY loss in gw storage
2. Late 1960's to Early 1970's: first zero accretion occurs with ~1,300 to ~1,500 TAFY gw pumping
3. 1920' to 2009: ~ +953 TAFY accretion to ~ - 445 TAFY accretion = ~ 1,400 TAFY difference
4. Slope of Accretion 1940 to mid-1970's ~ -27,000 AFY; late 1980's to mid-1990's ~ - 85,000 AFY; ratio ~ 3X
5. 1940 to mid-1970's and late 1980's to mid 1990's slopes of ground water pumping increases are mirror images of slopes of accretion losses
6. Mid -1990's to 2010 groundwater pumping slope is similar to 1940 to mid-1970's, but accretion slope is flat.
7. Ground water change in storage ~ 12 to 14 MAF 1922 to 2009 (Figure 35, C2VSim User's Manual v. 3.02-CG, v. R374, June 2013, and Table 10 C2VSim Final Report 3.02-CG, v. R374, June 2013)

Kit Custis, certified Geologist and Hydrogeologist for AquAlliance, 2014